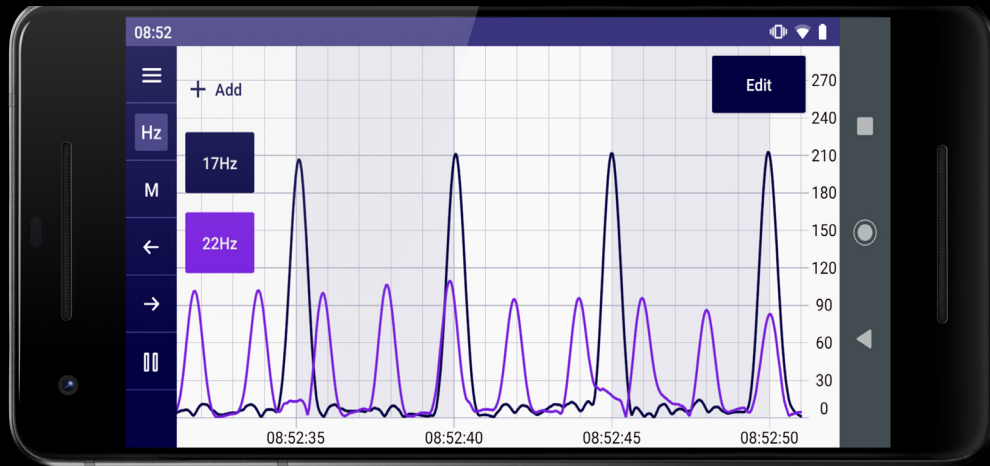


PRODUCT

# EMRx Android Application



THE ONLINE ELECTRONICS EMRX ANDROID APPLICATION CAN BE USED IN CONJUNCTION WITH ALL EMRX RECEIVERS FOR LOCATING LOST OR STALLED PIGS AND TRACKING PIGS FITTED WITH ANY ELECTROMAGNETIC (EM) PIG TRANSMITTER. IT CAN ALSO BE USED TO CONFIRM A PIG HAS LEFT OR ARRIVED AT A PARTICULAR LOCATION AND FOR GENERAL MONITORING OF PIG MOVEMENTS.

Key Benefits:

- Has the potential to greatly reduce downtime, and therefore costs, by facilitating the process of locating a stalled pig or confirming if a pig has left the launcher or been successfully received.
- Can be interfaced with the EMRx receivers via Bluetooth.
- Removes potential ambiguity over received EM signal in relation to background noise.
- Tracking logs and the ability to place markers provide an exportable record of pig tracking operations.
- Ability to pause, zoom and scroll through current and past data.
- Provides the user with the flexibility to set EMRx parameters such as the colour coded LEDs displaying the received signal.
- Intuitive and easy to use.

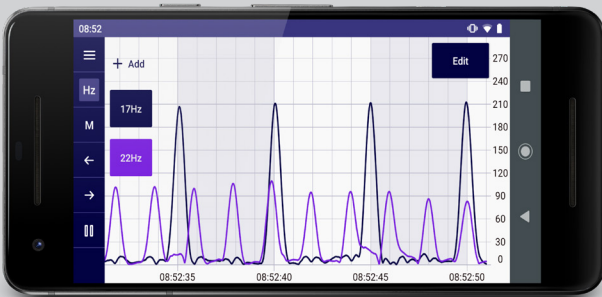
**INNOVATIVE  
KNOW-HOW**

Online Electronics  
T: +44 (0) 1224 714714  
E: oel-sales@ik-worldwide.com

[online-electronics.com](http://online-electronics.com)

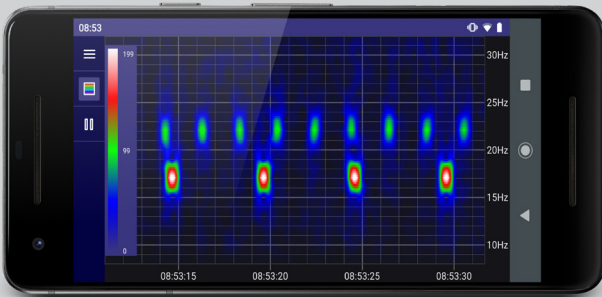
PRODUCT

# EMRx Android Application



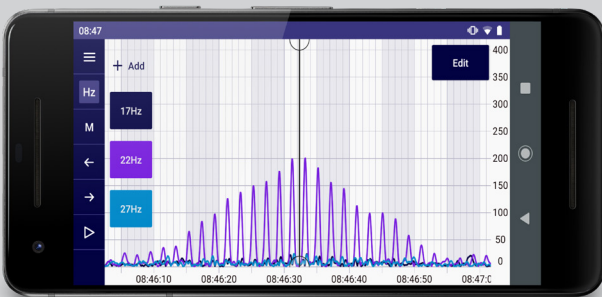
## SIGNAL CHART

The signal chart determines the relative signal strength of up to six different frequencies against time. This example shows typical display while both a 22Hz EM transmitter pulsing once every 2 seconds and 17Hz EM transmitter pulsing once every 5 seconds are received simultaneously.



## INTENSITY CHART

The intensity chart provides an intuitive representation of the signal strength at all frequencies between 10Hz and 30Hz against time. It is excellent for reliably determining the frequency and pulse rate of one or more transmitters simultaneously. This example shows the typical display while a 22Hz electromagnetic transmitter pulsing once every 2 seconds and a 17Hz electromagnetic transmitter pulsing once every 5 seconds are received simultaneously.



## MARKERS

Markers can be placed at points of interest in the signal chart along with any relevant accompanying notes. This information can be exported as part of a Tracking log that can be opened and examined at a later date.



Online Electronics  
T: +44 (0) 1224 714714  
E: oel-sales@ik-worldwide.com

[online-electronics.com](http://online-electronics.com)